

GRAFF BULLS

Selling Sons of



Connealy Sullivan



Connealy Mentor

Saturday
Feb 4th

1 pm MST



Sculptor of Amen GC



LT Aberdeen 9275

7 miles East
of Ogallala
on Hwy. 30



TC Aberdeen

Performance Data

Ultrasound & DNA Carcass

Free Wintering & Delivery

First Breeding Season Guarantee

CHUCK GRAFF

308-284-2444 res.

308-289-5841 cell

www.graffcattle.com

Welcome to Graff Cattle,

Wow - what a year in 2011. We are blessed in the heart of cattle country. We have had good moisture, good cattle prices and a bright future for the cattle industry thanks to the blessing of Mother Nature.

What we as cattlemen can do is control the genetics to enhance our productivity and insure a profitable business and industry, as we feed the US and our growing export market.

Keep in focus and practice the need to maintain a sound practical cow factory. No extremes are intended to be selected for at Graff Cattle - with the only exception of soundness! Extreme high growth or low birth weight or EPD's will only slow the process and development of a consistent cow herd (yes bull EPD's do change - sometimes I question the accuracy and reliability of even moderately proven bulls).

We, as seedstock producers, have to be realistic in evaluating structural soundness, fertility, calving ease, and maternal mothering traits balancing nature's environment with production efficiencies. In turn, we will be producing the conformation our customers and buyers desire and demand in our cattle.

Carcass traits rewards will continue to be monitored by the packers so we as breeders, both seedstock and commercial producers, will need to have the traits bred in first. We feel that we are attempting to take this carcass trait selection to the next level.

Stay prepared to continue your success in the beef industry in 2012 and beyond. We thank you for your interest, friendship, and patronage over the years and hope it will continue on for many more!

Nancy and Chuck Graff



GRAFF CATTLE

**7 1/2 miles east of Ogallala
on Highway 30
(1/2 mile east of Roscoe)**

**Saturday February 4th
1 pm MST
Complimentary Lunch served
at noon**

Auctioneer

Kyle Schow (308) 289-3772

Ring Service

**Kevin Schow (308) 280-0340
Errol Nordhausen (308) 289-1237**

Buyer Representative

**Jim Fuller (308) 280-1161
Jerry Wrage (308) 726-2721**

Announcements

**All announcements from the auction
block take precedence.**

Terms & Conditions

**Bulls sell under the accepted American
Angus Association Sale terms and
conditions**

**Free feeding through April 1st
Free Delivery
and
Additional Herd Health Guarantee**

**All bulls will be fed by Graff and de-
livered within Nebraska and adjoining
states at no charge to customers.**

Volume Discount

**Volume discount of 5% for purchase of 5
or more bulls.**

**SALE DAY PHONE
308-289-1579**

**HOME PHONE 308-284-2444
CHUCK'S CELL 308-289-5841
NANCY'S CELL 308-289-5842**

**Please be aware that there is limited cell
coverage at the place. For sale day bids
or to contact Chuck on sale day, you will
need to use the sale day phone number
listed above!**

Herd Health

**Veterinary service by the Animal Clinic.
All bulls have been tested and are
guaranteed breeders. Herd health
vaccination program recommendations
have been followed. Jan/Feb born bulls
were semen tested on Dec 29th. March
born bulls the week before the sale. We
are further insuring you, the buyer, as we
will have all bulls retested in late March
to insure that no winter semen damage
or injury occurred.**

**All yearling sale bulls are virgin bulls.
Igenity's DNA BVD-PI samples are all
negative!!**

**All bulls are verified to be AMF, NHF, or
CAF by either DNA testing or pedigree
unless noted CAC (Lot 6, 7, 8, 9)**

**Sight Unseen Purchase Guarantee
Approval on delivery if you have pur-
chased the bulls sight unseen with
Chuck or you don't own them. If you
can't make it to the sale on sale day
please give any of us a call and we will
gladly work with you to complete a sight
unseen sale bid.**

Breeding Season Guarantee

**All bulls sell with a first breeding sea-
son guarantee. The breeding season is
defined as 90 days from the first day of
turnout. Please see the page for details.**



Connealy Sullivan

Sire: Connealy Tobin
 Maternal Grand Sire: connealy Deep Canyon
 EPDs BW 2.1 WW 61 Yrlg 108 Milk 29

Connealy Sullivan was the top evaluated bull in the 2009 Connealy sale. His individual performance, phenotype and moderate frame was admired by Select Sires, commercial cattle producers and purebred breeders alike. Sullivan offspring have the structural correctness, muscling and good doing ability. Unfortunately, Sullivan is CA carrier. The bulls selling are CA free with the exception of those noted as CAC (consequently CAC bulls are recommended as terminal sires). You can expect a uniform set of performance calves from these Sullivan bulls.

Lot 1 GC Sullivan 1 208

7/8 Angus 1/8 Gelbvieh

BD: 01/17/11 HM Black Polled

BW	205 Adj Wt	365 Adj Wt	Adj. Scrotal	REA	IMF
90	770	1389	36.6	16.6	4.6

Tenderness	Yield Grade	Quality Grade
7	Preferred	Acceptable

Sire: Connealy Sullivan

BW	Wn	Yrlg	Milk	\$ B
2.1	61	108	29	77.99

Dam's Sire: Leachman Go Man Go

BW	Wn	Yrlg	Milk
*2	*53	*82	*17

Individual performance, dam production and consistency merit the Lot 1 designation. the freedom and stride in movement will hold up in the rough country. A top cattleman a couple years ago stated that the dam (a daughter of the Ideal 5411 Eriskay mating) was the ideal size and with the capacity for a Sandhill cow with a beautiful udder (and still is for a 10 year old cow). Retaining right to collect semen for family use prior to April delivery.



LOT 1



LOT 2

Lot 2 GC Sullivan 1 615

7/8 Angus 1/8 Gelbvieh

BD: 01/27/11 HM Black Scurred

BW	205 Adj Wt	365 Adj Wt	Adj. Scrotal	REA	IMF
90	729	1439	37.0	15.8	6.3

Tenderness	Yield Grade	Quality Grade
9	Preferred	Preferred

Sire: Connealy Sullivan

BW	Wn	Yrlg	Milk	\$ B
2.1	61	108	29	77.99

Dam's Sire: Apache Warrior

BW	Wn	Yrlg	Milk
G -1.9	30	67	22

An eye catching performance BULL!! You can see from the start of why Connealy Sullivan truly is a performance sire with muscling and grid topping genetics. The kind Cargill has been talking about with the tenderness, quality and yield grade!

Lot 3 GC Sullivan 1 8022

15/16 Angus 1/16 Gelbvieh

BD: 01/19/11 HM Black Polled

BW	205 Adj Wt	365 Adj Wt	Adj. Scrotal	REA	IMF
92	647	1372	35.2	13.5	6.4

Tenderness	Yield Grade	Quality Grade

Sire: Connealy Sullivan

BW	Wn	Yrlg	Milk	\$ B
2.1	61	108	29	77.99

Dam's Sire: Kahn Broadband 94L

BW	Wn	Yrlg	Milk
1.1	53	93	39

Square made, moderate frame eye catching correctness and gainability. A favorite for the University of Nebraska Judging Team members in December. Imagine what his set of feeder calves or finished cattle would bring on the market, but you better keep all the daughters for replacements. His dam is really good.



Lot 5 GC Sullivan 1 702

Registered Angus

BD: 01/16/11 AAA#

BW	205 Adj Wt	365 Adj Wt	Adj. Scrotal	REA	IMF
86	608	1163	32.7	13.6	5.3

Tenderness	Yield Grade	Quality Grade
5	Acceptable	Acceptable

Individual EPDs	BW	Wn	Yrlg	Milk

Sire: Connealy Sullivan

BW	Wn	Yrlg	Milk	\$ B
2.1	61	108	29	77.99

Dam's Sire: Sculptor of Amen GC

BW	Wn	Yrlg	Milk
2.5	34	73	5

A registered Angus tracing back to the original Eriskay donor cow from Ohlde in Kansas and Davis in Montana. Look at the length in this Sullivan son. Nicely balanced udder in the Sculptors.



LOT 3

Lot 4 GC Sullivan 1 204

7/8 Angus 1/8 Gelbvieh

BD: 01/24/11 HM Black Polled

BW	205 Adj Wt	365 Adj Wt	Adj. Scrotal	REA	IMF
94	687	1325	37.4	14.5	5.7

Tenderness	Yield Grade	Quality Grade
7	Preferred	Acceptable

Sire: Connealy Sullivan

BW	Wn	Yrlg	Milk	\$ B
2.1	61	108	29	77.99

Dam's Sire: Bon View New Design 878

BW	Wn	Yrlg	Milk
1.3	43	82	29

Eye appealing, structural sound, excellent gaining and out of a 9 year old 878 daughter that remains consistent in her production. The Sullivan's are truly a top sire group in the limited # of herds having used him.



LOT 4

Lot 6 GC Sullivan 1 314

3/4 Angus 1/4 Gelbvieh

BD: 01/23/11 ht black Polled CAC

BW	205 Adj Wt	365 Adj Wt	Adj. Scrotal	REA	IMF
84	677	1376	35.9	14.4	6.0

Tenderness	Yield Grade	Quality Grade
5	Acceptable	Preferred

Sire: Connealy Sullivan

BW	Wn	Yrlg	Milk	\$ B
2.1	61	108	29	77.99

Dam's Sire: RTB Bullseye

BW	Wn	Yrlg	Milk
GV			

Stout made and a true carcass offspring maker. A little more added Gelbvieh influence with Bullseye (a Cocoa X Traveler 6807). Hybrid vigor that will be passed on for you!



Lot 7 GC Sullivan 1 716

15/16 Angus 1/16 Gelbvieh

BD: 01/22/11 HM Black Polled CAC

BW	205 Adj Wt	365 Adj Wt	Adj. Scrotal	REA	IMF
82	652	1377	35.0	16.5	4.0

Tenderness	Yield Grade	Quality Grade
9	Acceptable	Preferred

Sire: Connealy Sullivan

BW	Wn	Yrlg	Milk	\$ B
2.1	61	108	29	77.99

Dam's Sire: BT Right Time 24J

BW	Wn	Yrlg	Milk
2.7	47	79	23

Another terminal sire that will produce right at the top for Cargill's desires - top gaining high percentage Angus cattle producing a tender high yielding and high quality carcass. If you sell your cattle on the rail, you will definitely get value added for your production with cattle sired by these Sullivans.



IGENITY DNA Interpretation

For those selling finished cattle on the grid, the carcass information provided is of value in your selections. The REA and IMF (Marbling) figures are the result of ultrasounding by Sandhills Ultrasound. (For rough interpretation, a 4 will grade choice). The higher the number the more marbling. Through DNA testing, markers have been identified for carcass traits. Those reported are based on Igenity's tissue DNA sample reading. More accuracy and markers will be needed before ultrasounding can be eliminated. The most identifiable and worked with DNA marker is tenderness. The possible scores for tenderness range from 1 to 10 with 10 being the most tender. **Cargill is very aggressive in acquiring tender documented finished cattle.** The yield grade and quality grade balancing is somewhat more objective. One must keep in mind the bull's traits as well as his sisters' traits that are out on the range, be it grass, cornstalks, and/or hay.

The following is Graff's interpretation based on combination of Igenity's numerous scores.

Yield Grade

- unacceptable
- acceptable
- preferred
- unacceptable

Quality Grade

- premium
- preferred
- acceptable
- unacceptable

Characteristics

- Poor fleshing ability YG 1
- YG 2 to YG 3.4
- YG 2
- YG is higher than 3.5

Characteristics

- prime
- top 2/3 of choice, CAB eligible
- lower 1/2 of choice
- select

With the present and future grain situation, coupled with the beef consumer desires cattle producers must be diligent in selecting moderate framed cattle that are productive and fertile in range situations, convert efficiently for the feedlot and demand the higher grid carcass dollars.

Lot 8 GC Sullivan 1 403

7/8 Angus 1/8 Gelbvieh

BD: 01/05/11 HM Black Polled CAC

BW	205 Adj Wt	365 Adj Wt	Adj. Scrotal	REA	IMF
82	689	1377	37.1	13.6	4.5

Tenderness	Yield Grade	Quality Grade
4	Preferred	Preferred

Sire: Connealy Sullivan

BW	Wn	Yrlg	Milk	\$ B
2.1	61	108	29	77.99

Dam's Sire: Bon View New Design 1407

BW	Wn	Yrlg	Milk
-0.1	43	85	32

A little more frame coming from the 1407 influence. Length of body weighs in this 1377 pound yearling! This is the bull that many asked about and was impressed with as a green tagged Sullivan calf when they drove away from last year's sale.



Lot 9 GC Sullivan 1 410

7/8 Angus 1/8 Gelbvieh

BD: 01/23/11 HM Black Polled CAC

BW	205 Adj Wt	365 Adj Wt	Adj. Scrotal	REA	IMF
88	687	1378	38.5	13.7	4.6

Tenderness	Yield Grade	Quality Grade
5	Acceptable	Acceptable

Sire: Connealy Sullivan

BW	Wn	Yrlg	Milk	\$ B
2.1	61	108	29	77.99

Dam's Sire: Apache Warrior

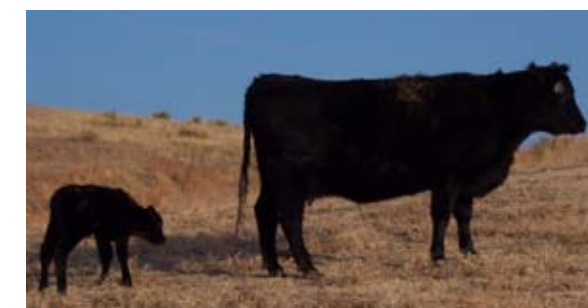
BW	Wn	Yrlg	Milk
GV	G-1.9	30	67

Another stretchy Sullivan with almost identical performance and frame as Lot 8. Make your calf crop consistent.



Herd Feeding Program

Cows are calved at Roscoe and Ald in April and early May on cool season grass. Cows and calves go to Arthur County the end of May for summer grazing. Calves receive no creep. August is preconditioning and weaning time. Bull calves have been on Purina's Limited Accuration with free choice of grass hay. Heifer calves run on cool season after growth until the snow flies or sometime in January. Cows have remained on grass in Arthur County until the cornstalks are available in the valley for grazing until early January and then receive hay and the cycle starts again.





Lot 10 GC Mentor 1 412

3/4 Angus 1/4 Gelbvieh

BD: 01/08/11 HM Black Scurred

BW	205 Adj Wt	365 Adj Wt	Adj. Scrotal	REA	IMF
84	701	1315	43.3	15.4	5.6

Tenderness	Yield Grade	Quality Grade
5	Acceptable	Preferred

Sire: Connealy Mentor

BW	Wn	Yrlg	Milk	\$ B
1.6	60	107	27	60.34

Dam's Sire: Apache Warrior

BW	Wn	Yrlg	Milk
G-1.9	30	67	22

GV

Remember the Connealy Mentors from last year's sale. This bull has the unique ability to have the early explosive growth, excellent fleshing ability and the ability to control mature frame size. His dam is an F2 halfblood. Apache Warrior is a Papa Forte (Angus) out of one of the very best (if not the best) black Gelbvieh cow. Retaining right to collect semen for family use prior to April delivery.



LOT 10

Connealy Mentor

Sire: GAR Retail Product

Maternal Grand Sire: Jauer 353 Traveler 589 27
 BW 85 Weaning Wt 849 Yearling Wt 1500
 EPDS BW 1.6 WW 60 Yrlg 107 Milk 27

Connealy Mentor was the top yearling weight bull in the 2007 Connealy calfcrop. He was injured and consequently was not in their sale after his recovery, Select Sires bought half interest in Mentor. Connealy Mentor is one of the few bulls that Connealy's have retained interest in. They have used Mentor for several breeding seasons.

Mentor is a powerful, correct, free moving bull with individual performance hard to match with a superb disposition. Mentor's son topped our sale last year and averaged over \$8,500 at Connealy's sale.

Last summer, Nancy and I visited Select Sires home office and bull stud. I was just as impressed with Mentor as a Mature bull as when I first saw him a couple of years ago. He is agile and sound on his feet and legs, and correct for body composition, consequently he will be used for an unprecedented 4th breeding season at Graff Cattle!

Lot 11 GC Mentor 1 313

13/16 Angus 3/16 Gelbvieh

BD: 01/18/11 HM Black Scurred

BW	205 Adj Wt	365 Adj Wt	Adj. Scrotal	REA	IMF
86	698	1344	37.6	14.0	6.0

Tenderness	Yield Grade	Quality Grade
5	Preferred	Preferred

Sire: Connealy Mentor

BW	Wn	Yrlg	Milk	\$ B
1.6	60	107	27	60.34

Dam's Sire: Bon View New Design 878

BW	Wn	Yrlg	Milk
1.3	43	82	29

Connealy Mentor has consistently worked well for Graff in siring performance oriented cattle with nice dispositions. The first Mentor's are just calving and based on observations he will be used a 4th year!



LOT 11

Lot 12 GC Mentor 1 708

13/16 Angus 3/16 Gelbvieh

BD: 01/12/11 HM Black Polled

BW	205 Adj Wt	365 Adj Wt	Adj. Scrotal	REA	IMF
88	641	1329	36.7	13.2	7.4

Tenderness	Yield Grade	Quality Grade
5	Acceptable	Preferred

Sire: Connealy Mentor

BW	Wn	Yrlg	Milk	\$ B
1.6	60	107	27	60.34

Dam's Sire: Sculptor of Amen GC

BW	Wn	Yrlg	Milk
2.5	34	73	5

The Mentor X Sculptor matings have produced stylish, correct moderate frame offspring. Sound as a douglas fir tree. Opportunities to capitalize on replacements, feeder calves or feedlot performance with carcass merits.



LOT 12

Lot 14 GC Mentor 1 601

Registered Angus

BD: 01/25/11 AAA# 17114650

BW	205 Adj Wt	365 Adj Wt	Adj. Scrotal	REA	IMF
92	608	1213	34.9	13.5	7.6

Tenderness	Yield Grade	Quality Grade
7	Preferred	Preferred

Individual EPDs	BW	Wn	Yrlg	Milk
	3.6	51	90	22

Sire: Connealy Mentor

BW	Wn	Yrlg	Milk	\$ B
1.6	60	107	27	60.34

Dam's Sire: Hyline Right Way 781

BW	Wn	Yrlg	Milk
5.5	57	89	23

Uniform thick topline in the Mentors, year after year and this registered Angus is no different. Right Way 781 was a moderate framed high performance herd sire used nationally a couple years ago as the top Right time 338 son.



LOT 13

Lot 13 GC Mentor 1 8002

Registered Angus

BD: 01/21/11 AAA# 17114652

BW	205 Adj Wt	365 Adj Wt	Adj. Scrotal	REA	IMF
83	657	1241	37.2	14.5	5.9

Tenderness	Yield Grade	Quality Grade
8	Preferred	Preferred

Individual EPDs	BW	Wn	Yrlg	Milk
	1.5	50	93	21

Sire: Connealy Mentor

BW	Wn	Yrlg	Milk	\$ B
1.6	60	107	27	60.34

Dam's Sire: Sculptor of Amen GC

BW	Wn	Yrlg	Milk
2.5	34	73	5

Registered Angus. Length of body and a top REA for an Angus! Excellent DNA markers for carcass. Big scrotal also.



LOT 14

TOP GENETICS CONTINUE TO PAY DIVIDENDS FOR GENERATIONS!



Sculptor of Amen GC

Sire: WCC Precision E161 J239
 Maternal Grand Sire: Rito 2RT2
 BW 96 Weaning Wt 676 Yearling Wt 1260
 EPDS BW 2.5 WW 34 Yrlg 73 Milk 5

Sculptor now 7 years of age is still a picture perfect bull for soundness, agility, carcass oriented type sire with style and class. Sculptor's wide topline, square rump and bulging stifle as well as Angus character is passed on through his offspring and their descendents. The mark of a true breeding bull!

Lot 15 GC Sculptor 1 101

Registered Angus

BD: 01/30/11 AAA# Pending

BW	205 Adj Wt	365 Adj Wt	Adj. Scrotal	REA	IMF
94	662	1272	37.1	15.2	6.3

Tenderness	Yield Grade	Quality Grade
5	Preferred	Preferred

Individual EPDs	BW	Wn	Yrlg	Milk

Sire: Sculptor of Amen GC

BW	Wn	Yrlg	Milk	\$ B
2.5	34	73	5	57.41

Dam's Sire: Bon View New Design 1407

BW	Wn	Yrlg	Milk
-0.1	43	85	32

Registered Sculptor son with 1407 and Connealy frontline on the dam side and the old Eriskay donor cow. Longevity is something commercial cattle producers can appreciate and value. This particular cow family lasts well beyond 10 years. 5 generations and soon to be 6 in production currently in the herd.



LOT 15

Lot 16 GC Sculptor 1 302

Registered Angus

BD: 02/13/11 AAA# 17114651

BW	205 Adj Wt	365 Adj Wt	Adj. Scrotal	REA	IMF
82	650	1216	36.3	12.4	6.1

Tenderness	Yield Grade	Quality Grade
7	Acceptable	Acceptable

Individual EPDs	BW	Wn	Yrlg	Milk
	2.1	39	76	19

Sire: Sculptor of Amen GC

BW	Wn	Yrlg	Milk	\$ B
2.5	34	73	5	57.41

Dam's Sire: Bon View New Design 1407

BW	Wn	Yrlg	Milk
-0.1	43	85	32

The dam has had several bull sale toppers as well as daughters retained in the herd. Consistent top producer Eriskay family.



LOT 16

Lot 17 GC Sculptor 1 515

3/4 Angus 1/4 Gelbvieh

BD: 02/11/11 HM Black Scurred

BW	205 Adj Wt	365 Adj Wt	Adj. Scrotal	REA	IMF
84	601	1159	35.8	14.4	6.5

Tenderness	Yield Grade	Quality Grade
9	Preferred	Preferred

Sire: Sculptor of Amen GC

BW	Wn	Yrlg	Milk	\$ B
2.7	34	71	6	47.61

Dam's Sire: Apache Warrior

BW	Wn	Yrlg	Milk	
GV	G-1.9	30	67	22

Touch more Gelbvieh for that hybrid vigor for your herd.



TC Aberdeen 759

Sire: CRA Bextor
 Maternal Grand Sire: Bon View New Design 208
 BW 80 Weaning Wt 742 Yearling Wt 1427
 EPDS BW 0.8 WW 59 Yrlg 106 Milk 44

Lot 18 GC Aberdeen 1 9024

29/32 Angus 3/32 Gelbvieh

BD: 01/14/11 HM Black Polled

BW	205 Adj Wt	365 Adj Wt	Adj. Scrotal	REA	IMF
73	691	1336	35.5	12.7	6.1

Tenderness	Yield Grade	Quality Grade
3	Preferred	Preferred

Sire: TC Aberdeen 759

BW	Wn	Yrlg	Milk	\$ B
0.8	59	106	44	70.14

Dam's Sire: Sculptor of Amen GC

BW	Wn	Yrlg	Milk
2.5	34	73	5

The top TC Aberdeen 759 phenotypically and yearling performance bull. TC Aberdeen is an outcross to the Mytts and Final Answers, Connealy Thunders, Nebraskas and TC Franklins. TC Aberdeen ranked 23rd in total registrations for 2011 and was the 3rd top selling semen heifer bull for Genex in 2011. The calves will match up with the frame in your cow's calves.



LOT 18

Lot 19 GC Aberdeen 1 9009

15/16 Angus 1/16 Gelbvieh

BD: 01/10/11 HM Black Polled

BW	205 Adj Wt	365 Adj Wt	Adj. Scrotal	REA	IMF
74	653	1210	34.4	11.5	6.8

Tenderness	Yield Grade	Quality Grade
6	Preferred	Acceptable

Sire: TC Aberdeen 759

BW	Wn	Yrlg	Milk	\$ B
0.8	59	106	44	70.14

Dam's Sire: Sculptor of Amen GC

BW	Wn	Yrlg	Milk
2.5	34	73	5

According to ultrasound carcass evaluation, this calving ease specialist has high marbling traits. The TC Aberdeens can be relied on for docility, excellent yearling and leaving a set of feminine milky daughters.



Lot 21 GC Aberdeen 1 9027

15/16 Angus 1/16 Gelbvieh

BD: 01/13/11 HM Black Polled

BW	205 Adj Wt	365 Adj Wt	Adj. Scrotal	REA	IMF
72	587	1201	34.5	14.3	4.8

Tenderness	Yield Grade	Quality Grade
5	Preferred	Preferred

Sire: TC Aberdeen 759

BW	Wn	Yrlg	Milk	\$ B
0.8	59	106	44	70.14

Dam's Sire: Sculptor of Amen GC

BW	Wn	Yrlg	Milk
2.5	34	73	5

Another 14 square inch REA heifer bull loaded with maternal genetics. You'll like the fleshing ability and moderate frame of his heifer offspring.



Lot 20 GC Aberdeen 1 9028

7/8 Angus 1/8 Gelbvieh

BD: 01/21/11 HM Black Polled

BW	205 Adj Wt	365 Adj Wt	Adj. Scrotal	REA	IMF
73	617	1163	34.8	13.1	6.9

Tenderness	Yield Grade	Quality Grade
4	Preferred	Preferred

Sire: TC Aberdeen 759

BW	Wn	Yrlg	Milk	\$ B
0.8	56	106	44	70.14

Dam's Sire: Sculptor of Amen GC

BW	Wn	Yrlg	Milk
2.5	34	73	5

Straight lines, soundness combined with excellent carcass traits in this Aberdeen son.

LT Aberdeen 9275

Sire: TC Aberdeen 759

Maternal Grand Sire: KCF Bennett Total
(Sitz Alliance 6595X EXT)

BW 79 Weaning Wt 766 Yearling Wt 1425
EPDS BW 0.9 WW 56 Yrlg 106 Milk 33

Selected as who was the top Aberdeen son to sell at either TC Ranch or at Lindskov Thiel Ranch in 2010. Excellent EPDs for BW, Weaning, Yearling and ratioed 112 for REA in a large contemporary group. Excellent disposition, big testicles and sound footed.

His second calf crop is arriving and as we expected they are calving with ease and have more depth of rib, more muscle and hind quarters with extension than other calving ease big name bulls. Use as an outcross on Final Answers and Mytty daughters.



Lot 22 GC LT Aberdeen 1 710

15/16 Angus 1/16 Gelbvieh

BD: 01/07/11 HM Black Polled

BW	205 Adj Wt	365 Adj Wt	Adj. Scrotal	REA	IMF
80	697	1220	38.5	16.3	5.9

Tenderness	Yield Grade	Quality Grade
8	Preferred	Preferred

Sire: LT Aberdeen 9275

BW	Wn	Yrlg	Milk	\$ B
0.9	56	106	33	68.45

Dam's Sire: Sculptor of Amen GC

BW	Wn	Yrlg	Milk
2.5	34	73	5

The oldest LT Aberdeen 9275 son in the sale. LT Aberdeen 9275 will add more depth of rib than Aberdeen and has the extra 3 generations of pathfinder Angus individuals in Sitz Alliance 6595, Bennet Total and EXT. Solid performance!



Lot 23 GC LT Aberdeen 1 711

15/16 Angus 1/16 Gelbvieh

BD: 02/10/11 HM Black Polled

BW	205 Adj Wt	365 Adj Wt	Adj. Scrotal	REA	IMF
80	653	1216	31.6	13	6

Tenderness	Yield Grade	Quality Grade
5	Preferred	Acceptable

Sire: LT Aberdeen 9275

BW	Wn	Yrlg	Milk	\$ B
0.9	56	106	33	68.45

Dam's Sire: Sculptor of Amen GC

BW	Wn	Yrlg	Milk
2.5	34	73	5

High % Angus and reliability for calving ease. These 9275's and his sire have averaged about 5 days less for gestation than the average Angus in our herd. Makes it nice calving and breed back on a set of 2 year olds.

Lot 24 GC LT Aberdeen 1 8014

7/8 Angus 1/8 Gelbvieh

BD: 03/07/11 HM Black Polled

BW	205 Adj Wt	365 Adj Wt	Adj. Scrotal	REA	IMF
79	651	1165	34.6	14.4	7.2

Tenderness	Yield Grade	Quality Grade
5	Preferred	Acceptable

Sire: LT Aberdeen 9275

BW	Wn	Yrlg	Milk	\$ B
0.9	56	106	33	68.45

Dam's Sire: Sculptor of Amen GC

BW	Wn	Yrlg	Milk
2.5	34	73	5

Same length, smoothness and strong topline as in his older brothers. Yes, you can have strong REA measurements in heifer bulls and this set of 9275s proves it!

BULLS COME IN ALL STYLES BUT THAT MEANS THAT THEIR OFFSPRING DO TO - AIM FOR THE BEST TO SUCCEED IN YOUR HERD AND YOUR SALES FOR YEARS TO COME!

Lot 26 GC LT Aberdeen 1 9002

Registered Angus

BD: 03/07/11 AAA# 17114653

BW	205 Adj Wt	365 Adj Wt	Adj. Scrotal	REA	IMF
75	698	1180	33.8	13.7	6.5

Tenderness	Yield Grade	Quality Grade
7	Preferred	Acceptable

Individual EPDs	BW	Wn	Yrlg	Milk
	1.4	49	92	26

Sire: LT Aberdeen 9275

BW	Wn	Yrlg	Milk	\$ B
0.9	56	106	33	68.45

Dam's Sire: Sculptor of Amen GC

BW	Wn	Yrlg	Milk
2.5	34	73	5

Registered Angus, 9275 son. For the calendar year 9275 was bred across the board for our heifers as we felt his performance and kind will surpass that of his sire TC Aberdeen 759, if for no other reason than 9275's dam.

MAKE SURE YOU MAXIMIZE YOUR OPPORTUNITY IN MARKETING THRU YOUR GENETIC SELECTIONS TODAY!

Lot 25 GC LT Aberdeen 1 206

3/4 Angus 1/4 Gelbvieh

BD: 03/17/11 ht black Polled

BW	205 Adj Wt	365 Adj Wt	Adj. Scrotal	REA	IMF
86	630	1172	34.8	14.5	6.6

Tenderness	Yield Grade	Quality Grade
7	Preferred	Acceptable

Sire: LT Aberdeen 9275

BW	Wn	Yrlg	Milk	\$ B
0.9	56	106	33	68.45

Dam's Sire: Bon View New Design 878

BW	Wn	Yrlg	Milk
1.3	43	82	29

Longevity, length and strong maternal traits are bred into this 9275 son. Recommended for cows or only larger framed heifers because of the higher Gelbvieh influence.



Lot 27 GC LT Aberdeen 1 8008

7/8 Angus 1/8 Gelbvieh

BD: 03/08/11 HM Black Polled

BW	205 Adj Wt	365 Adj Wt	Adj. Scrotal	REA	IMF
81	704	1186	33.9	14.7	6.7

Tenderness	Yield Grade	Quality Grade
4	Acceptable	Unacceptable

Sire: LT Aberdeen 9275

BW	Wn	Yrlg	Milk	\$ B
0.9	56	106	33	68.45

Dam's Sire: Sculptor of Amen GC

BW	Wn	Yrlg	Milk
2.5	34	73	5

Younger but good performance with calving ease genetics.

Lot 28 GC LT Aberdeen 1 9029

7/8 Angus 1/8 Gelbvieh

BD: 03/08/11 HM Black Polled

BW	205 Adj Wt	365 Adj Wt	Adj. Scrotal	REA	IMF
71	704	1301	34.8	12.4	6

Tenderness	Yield Grade	Quality Grade
8	Preferred	Acceptable

Sire: LT Aberdeen 9275

BW	Wn	Yrlg	Milk	\$ B
0.9	56	106	33	68.45

Dam's Sire: Sculptor of Amen GC

BW	Wn	Yrlg	Milk
2.5	34	73	5

Another young calving ease specialist with added REA measurements. Fleshing ability and soundness will keep this bull in use for several years as a top calving ease bull.

Thanks for coming!



Value of Composites

Angus/Gelbvieh Composite cattle have the best blending of both breeds which allows for uniformity, added vigor, increased longevity, better disease resistance, and efficiency in feeding conversion. The end results are leaner carcasses that grade choice and have the maternal traits maintained in replacement females.



Just a few of our friends at the 2011 Bull Sale



Breeding Season Guarantee

Please notify Graff of claims as soon as possible or before Sept 1, 2012. Bulls injured the first 30 days will be replaced or buyer receives full credit less salvage. Bulls injured after 30 days turnout, the buyer will receive the salvage plus ½ the difference between purchase and salvage value. Death and injury due to negligence or willful mistreatment are not covered.

Record System

All Graff Cattle cows are enrolled in the Angus Herd Improvement Records (AHIR) Beef Record System. Weights and adjustments are processed by AHIR. Additional data is processed according to the Beef Improvement Federation guidelines.

Thank you for your friendship,
thank you for your patronage,
thank you to all of our military servicemen and women, and
thank you for that wonderful item on the table
called BEEF- It's for dinner!

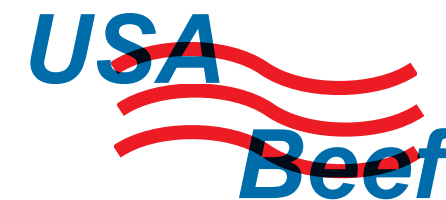
Bulls are available any time for viewing at Graff Cattle.
Stop in and check them out!



*In memory of Bud Berryman
1921-2011*

When Nancy and I moved to Ogallala with three young daughters, one of the first people we met was "Bud". He had just retired and moved to Ogallala from his ranch south of Arthur. While I was on the road getting to know a number of commercial cattlemen and selling bulls across several states, Bud would help Nancy and the girls feed our embryo donor cows. Bud helped push many Angus bulls up the alley for health and semen testing, sorting and shipping bulls. (He always preferred Herefords though.) For over 20 years, we have run cows on the Berryman ranch. I always said pound for pound Bud was the toughest in this part of Nebraska with the skin cancer he endured.

*Thanks again Bud!
Chuck, Nancy and girls*



It's for dinner!

**SEE YOU AT
THE SALE!!**



Graff Cattle

Ogallala

Registered Angus
& Angus Composites



308-289-5841
308-284-2444

Saturday February 4th 1 pm MST

Sale to be held 7 1/2 miles east of Ogallala on Hwy 30

All Sired by Registered Angus Sires
Structural Soundness
Carcass Evaluation
DNA Trait Tested
Free Delivery
BVD-PI Negative

Optimum Performance
Maternal Traits
Breeding Season Guarantee
Free Feeding til April 1st
Yearling Virgin Bulls
All Bulls are AMF & NHF!

Graff Cattle

550 FOX HILL

OGALLALA NE 69153

FIRST CLASS MAIL